






26 William Street NARRANDERA NSW

4  2  2 

This Californian bungalow is located in Central Narrandera in one of Narrandera's most enviable treelined positions, of solid red brick construction, featuring two living areas. This home boasts rich periodic style features blended seamlessly with a spectacular light filled contemporary living space.

Superbly located, close to schools, sporting facilities and within walking distance to the main street, this sizeable and stylish home delivers both convenience and class. Originally constructed in the 1940's the home is filled with Victorian periodic charm featuring ornate ceilings, an open fire place and gorgeous picture rails.

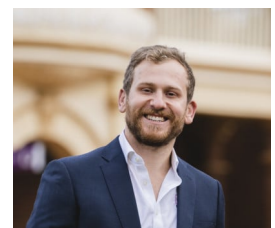
A modern contemporary kitchen is central to the home and

[For full version visit the website](https://www.qplrural.com.au)

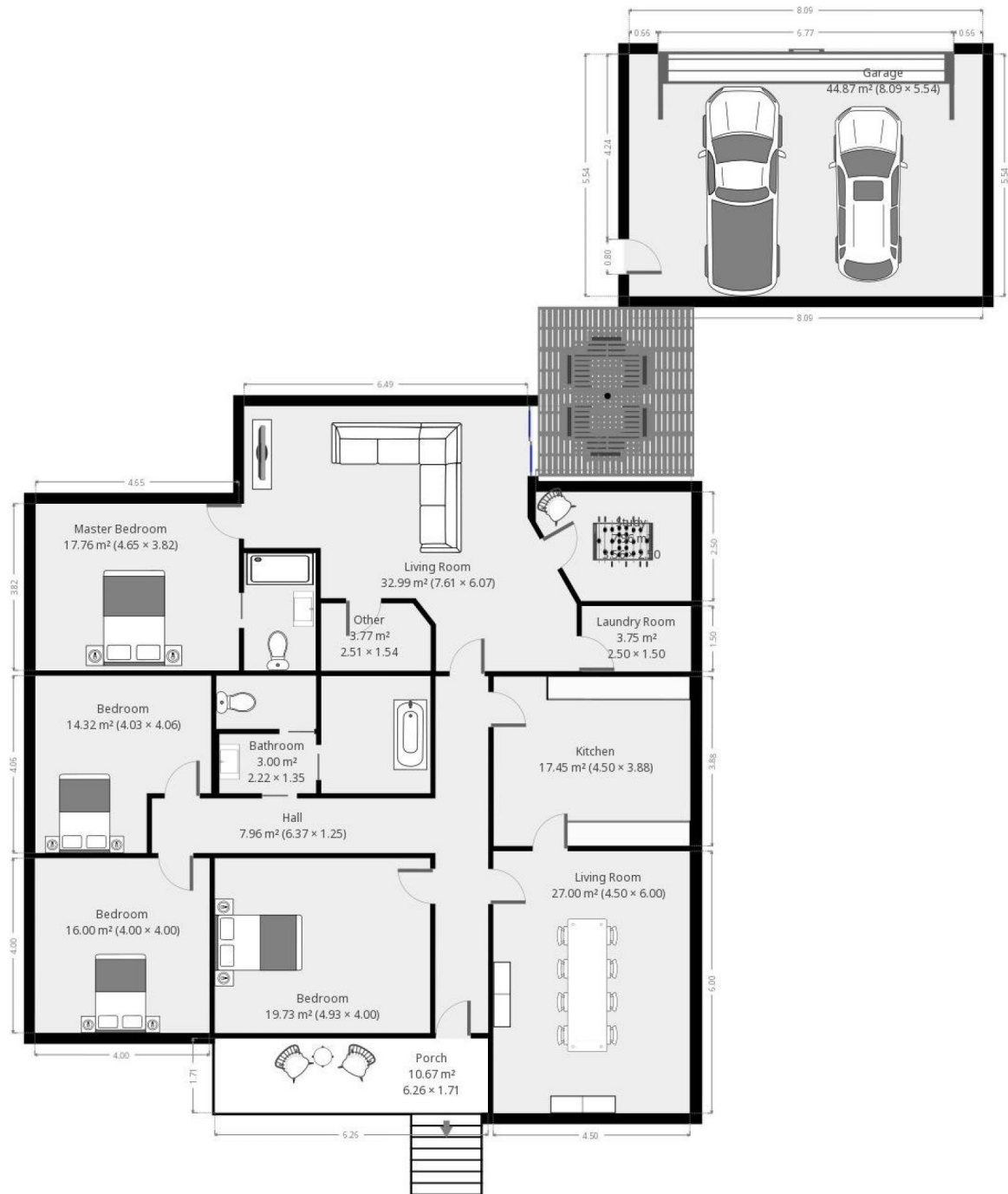
Type : House
Price : \$ 325,000
Land Size : 632 sqm
View : <https://www.qplrural.com.au/sale/nsw/riverina/narrandera/residential/house/7242470>



Leisa Williams
0269781008



Andrew Pellow
0269781008



THIS FLOORPLAN IS PROVIDED WITHOUT WARRANTY OF ANY KIND. SENSOPIA DISCLAIMS ANY WARRANTY INCLUDING, WITHOUT LIMITATION, SATISFACTORY QUALITY OR ACCURACY OF DIMENSIONS.