



10 View Street TEMORA NSW

3  1  3 

This 3 bedroom double brick home is conveniently located close to schools, shops, churches and sporting facilities.

There are many original features in this property, like ornate ceilings, lead light windows, picture rails, and polished floor boards. Plus there has been some tasteful updating done.

Lounge room has a split system air conditioner and mantle with imitation gas log fire place. Bedrooms have ceiling fans.

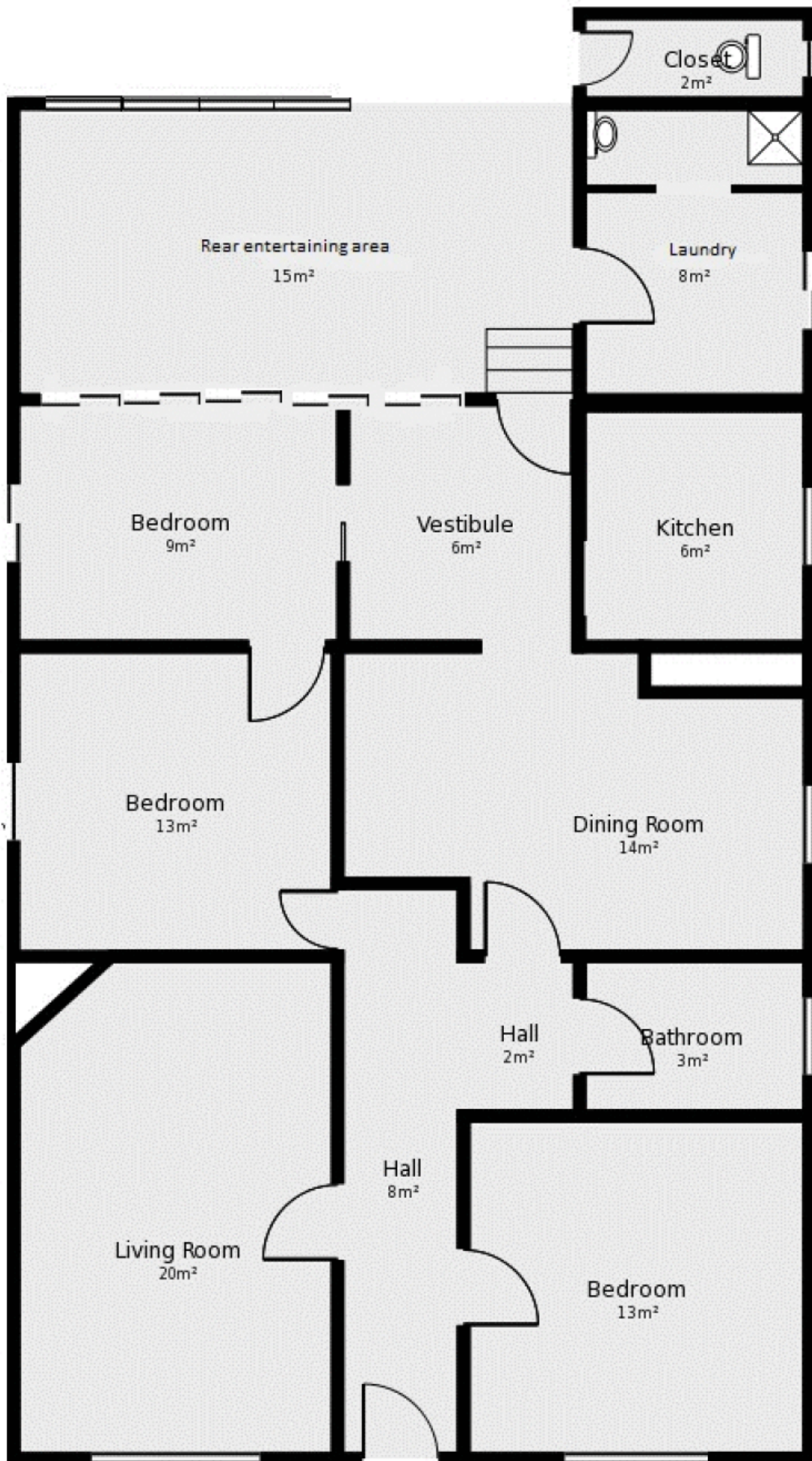
The modern kitchen has dishwasher and stainless steel stove/oven and adjoins the separate dining room.

Main bathroom has bath with shower over, vanity and toilet. Second shower, basin, double wash tub and toilet in the

View : <https://www.qplrural.com.au/lease/nsw/riverina/temora/residential/house/7243314>



Bev Pellow
0269781008



NOTE: Floor plan and sizes approx