






7375 Burley Griffin Way TEMORA NSW

3  1  5 

Are you thinking of making a tree change? Have a look at this beauty.

Situated just 6km from Temora on the Burley Griffin Way is this 56.96ha property which is looking for YOU!

The house is a well maintained Hardiplank home with 3 roomy bedrooms all with built in robes. Open plan living area and kitchen with corner pantry. Reverse cycle air conditioner and gas hot water.

Almost full wrap around verandahs where you can sit, check out the scenery and watch the world go by.

Externally there is a huge 5 car garage with roller doors.

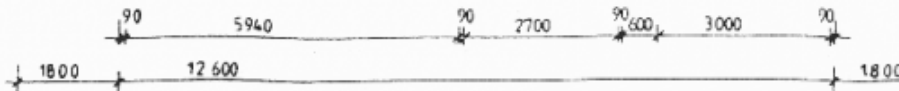
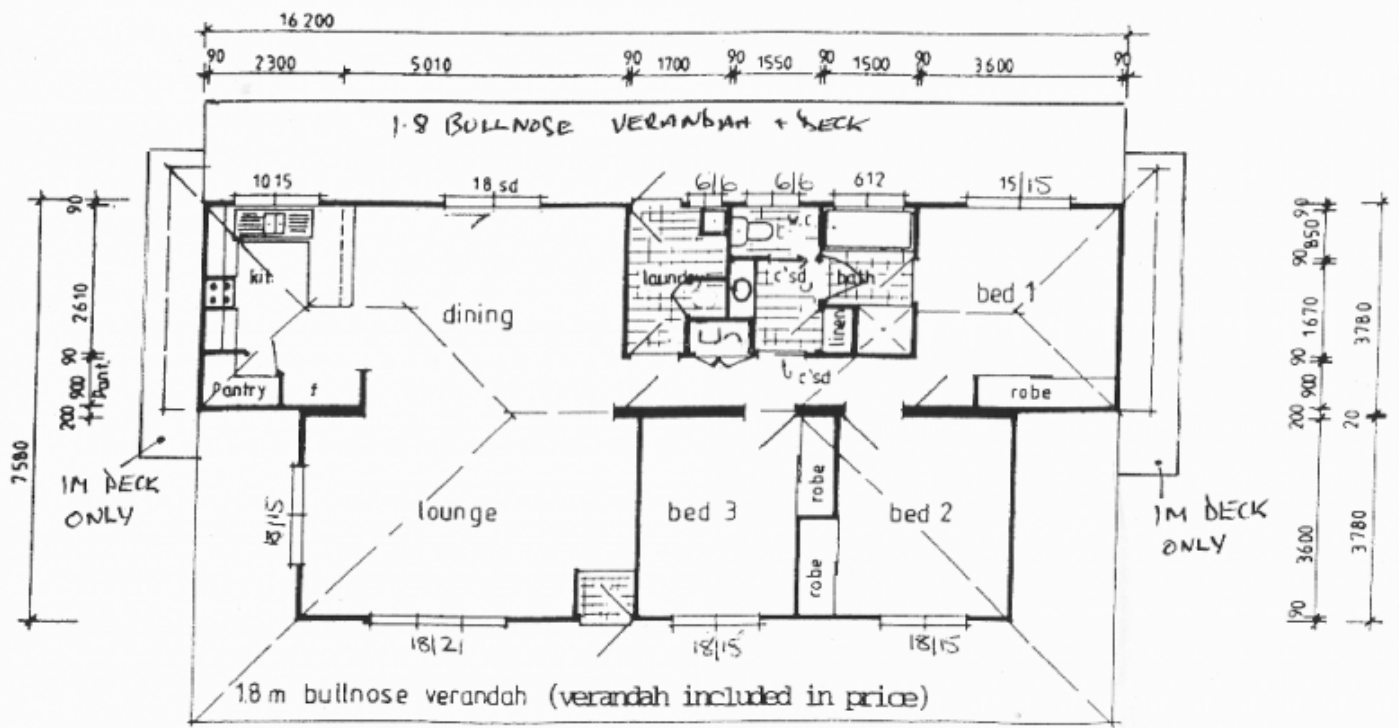
[For full version visit the website](https://www.qplrural.com.au)

Type : Rural
Price : \$ 500,000
Land Size : 569600 sqm
View : <https://www.qplrural.com.au/sale/nsw/riverina/temora/residential/rural/7243483>



Bev Pellow
0269781008

front elevation



TERMITE/WHITE ANT CONT.
 THIS BUILDING MUST BE
 PROTECTED AGAINST TERMITES
 WHITE ANT ATTACK
 USE AUSTRALIAN STANDARD 3:
 OWNERS - BUILDERS
 THIS IS YOUR RESPONSIBILITY!