



119 Bland Estate Road BRIBBAREE NSW

3  1  1 

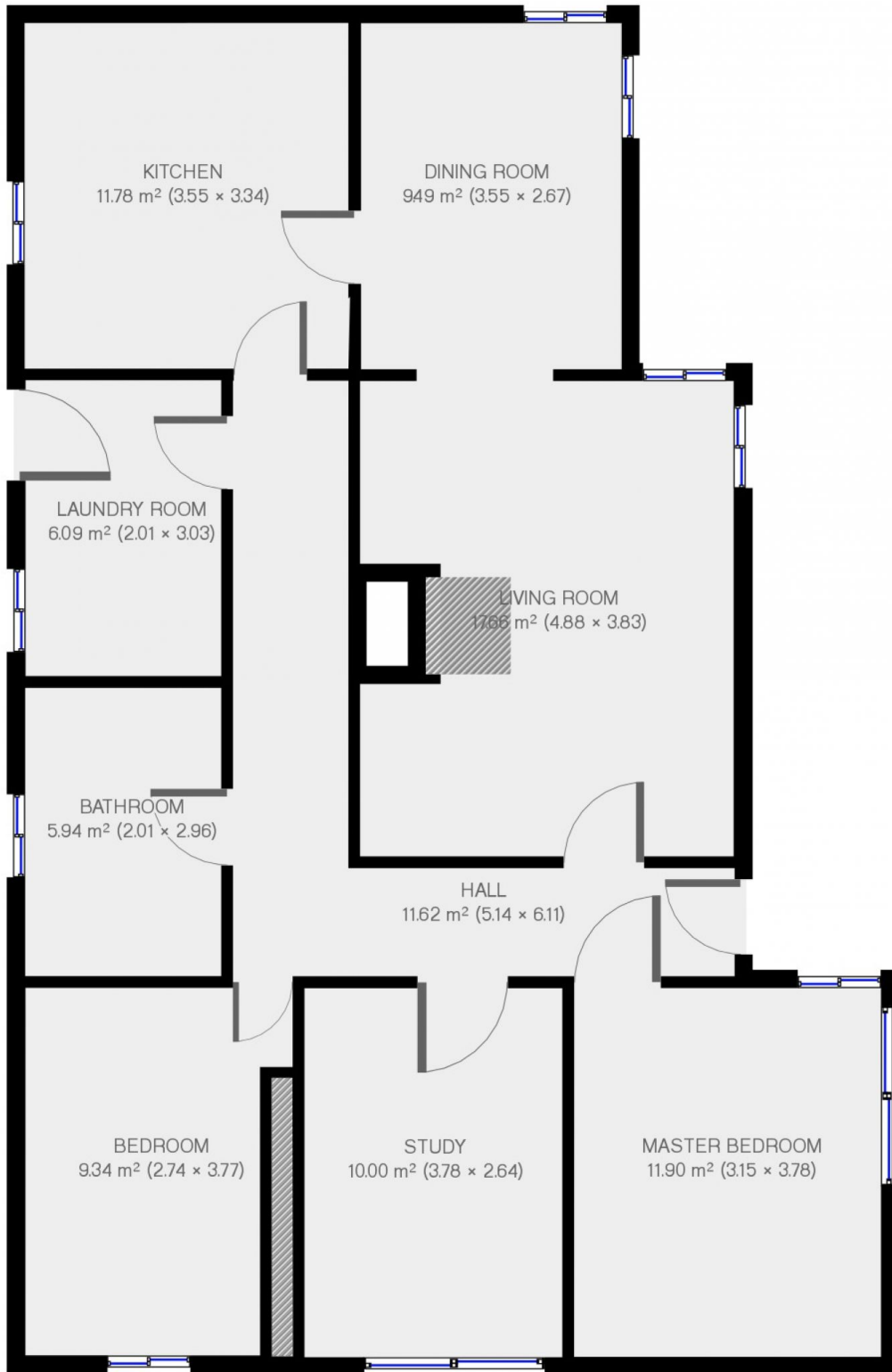
316ha (780ac).95% arable 52km west of Young 56Km East of Temora Comfortable 3 bed weather board home
Machinery shed, workshop with concrete floor and power
2 stand Shearing shed & steel sheep yards.
Hay shed & abundance of grain storage (1,000ton shed)
4 x 45ton silo's
Well watered with 11 dams
100 Acres of wheat given in.
Flat land, dark rich soils ideal for cropping or grazing
100 Acres of Wheat given in.
Adjoins Moonaba also for auction.

Type : Rural
Price : \$ 906,033
Land Size : 3160000 sqm
View : <https://www.qplrural.com.au/sale/nsw/capital-monaro-snowy/bribbaree/residential/rural/7243503>



Craig Pellow
0269781008

Ground Floor



THIS FLOORPLAN IS PROVIDED WITHOUT WARRANTY OF ANY KIND. SENSOPRIA DISCLAIMS ANY WARRANTY INCLUDING, WITHOUT LIMITATION, SATISFACTORY QUALITY OR ACCURACY OF DIMENSIONS.

