



## NARRANDERA

7  4  10 

"Daleford? One of the most superior architecturally designed homes in the district. Set privately well back on the property and only minutes from town, this spacious home on approx 28 acres with town water is sure to impress. Comprised of 5 good sized bedrooms all with BIR, master has RC/AC, TV point and ensuite with deep spa bath, separate shower and toilet. The master bedroom is adjacent to the second living room or parent retreat with slow combustion heating. Two large family bathrooms, one with bath, sep shower and sep toilet. The other has an oversize shower, double vanity and toilet. Large laundry with double trough and access outside. Generous light filled open kitchen, dining and Lounge with abundance of cupboards and bench space, double pantry and double wall oven. RC/AC, slow combustion heating making the

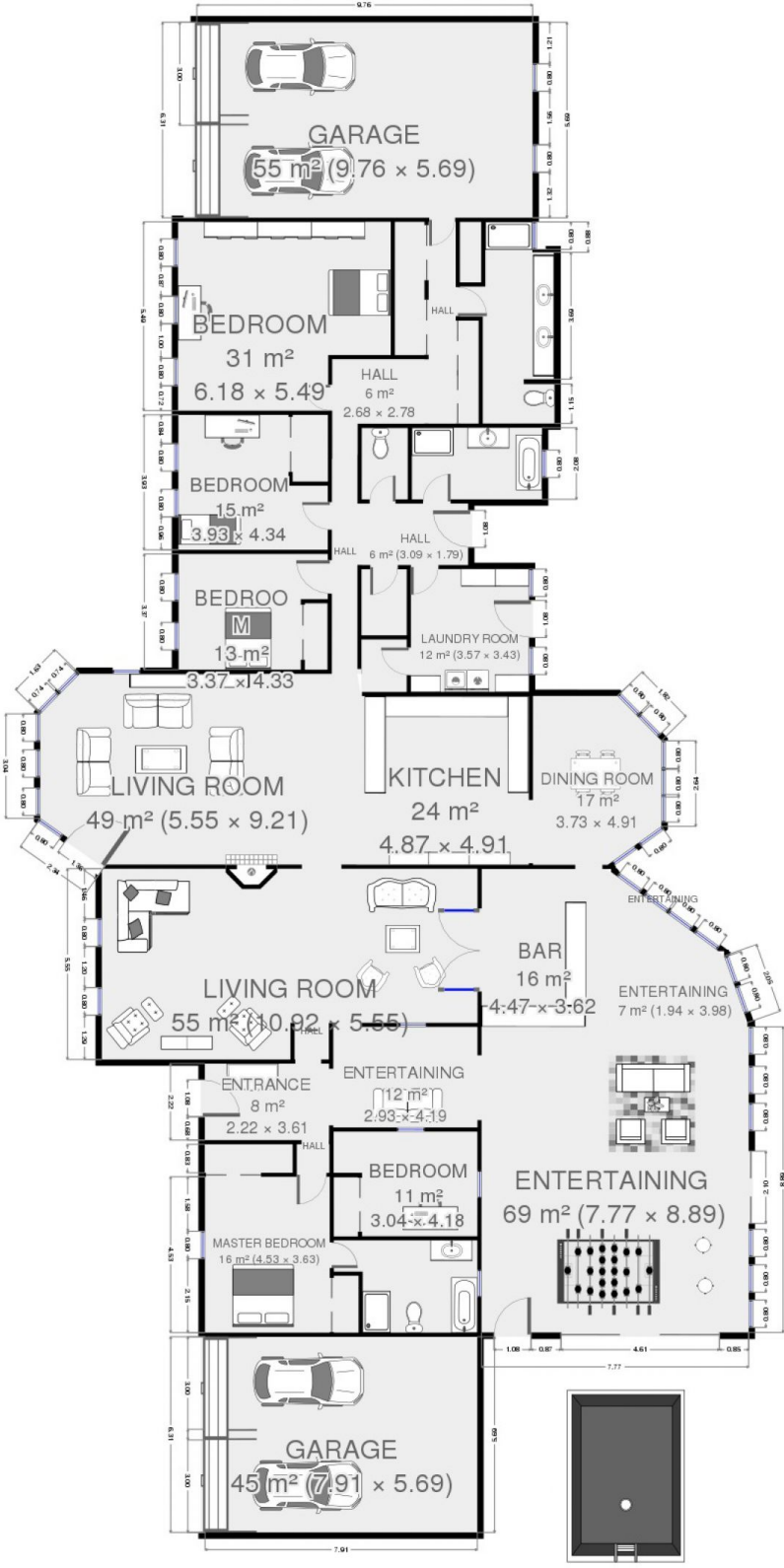
**Type** : Rural  
**Price** : \$ 752,000  
**Land Size** : 114526 sqm  
**View** : <https://www.qplrural.com.au/sale/nsw/riverina/narrandera/residential/rural/7243505>



**Lachlan Pellow**  
**0269781008**

[For full version visit the website](https://www.qplrural.com.au)

# Ground Floor



THIS FLOORPLAN IS PROVIDED WITHOUT WARRANTY OF ANY KIND. SENSOPRIA DISCLAIMS ANY WARRANTY INCLUDING, WITHOUT LIMITATION, SATISFACTORY QUALITY OR ACCURACY OF DIMENSIONS.