



172 Springdale Wallundry Road TEMORA NSW

3  2  1 

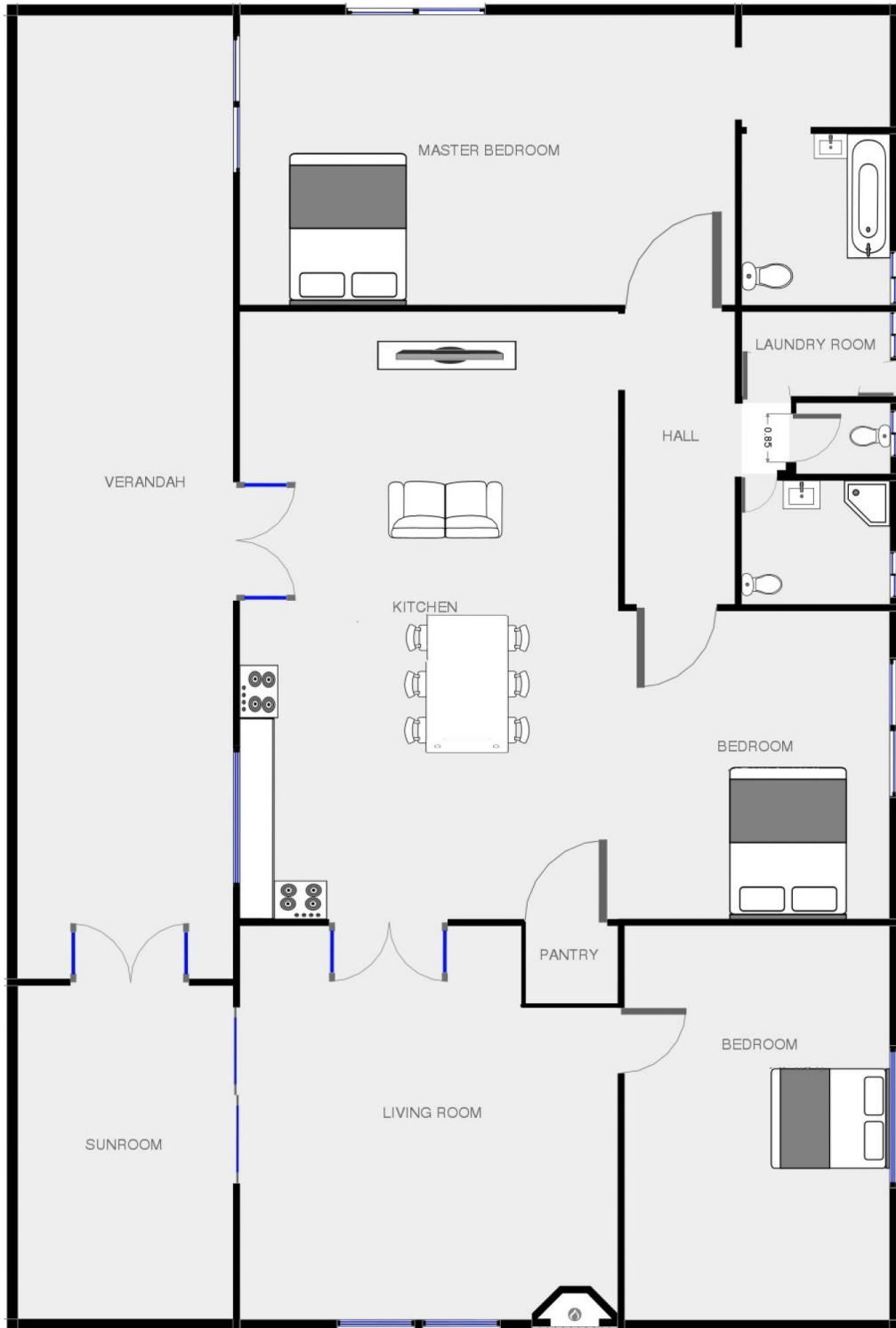
Situated in the quaint town of Springdale and only 20 kms from Temora, you will find this idyllic Rural setting on approx. 108 undulating Acres. Three bedroom rendered ranch style homestead, generous master bedroom has WIR and ensuite, shower over bath and toilet. Light filled, open Kitchen, dining and lounge with slow combustion heating, air conditioning, feature "Metters? wood stove, electric stove and large WI butler pantry. Beautiful views over the dam and paddock with French doors onto the verandah/ alfresco area. Formal lounge room with slow combustion heating and sliding door into the sunroom. Main bathroom has shower and toilet, good size laundry, third toilet, single carport and storage room. Approx 40% arable with a mix of native trees and iron bark. Storage room or small cabin hidden away on the property, five good

Type : Rural
Price : \$ 240,000
Land Size : 439200 sqm
View : <https://www.qplrural.com.au/sale/nsw/riverina/temora/residential/rural/7243763>



Lachlan Pellow
0269781008

[For full version visit the website](https://www.qplrural.com.au)



INCLUDING, WITHOUT LIMITATION, SATISFACTORY QUALITY OR ACCURACY OF DIMENSIONS.