



2 Mitchell Street Leeton NSW

3  1  1 

Located on a corner block on Mitchell St, there is plenty of potentials to be found in this study, a three-bedroom home.

Containing a functional, family-friendly floor plan, the home contains a large living area adjoined to the open dining and kitchen area. The three bedrooms are all generous in size and all have built-in robes. The backyard is fully fenced, with side street access to the double shed, with concrete floor and power.

With some restorative work and a keen investor's insight, this great little property could provide a big bang for your buck!

For all inspections and enquiries, contact Craig Tyrrell at 0473 748 272.

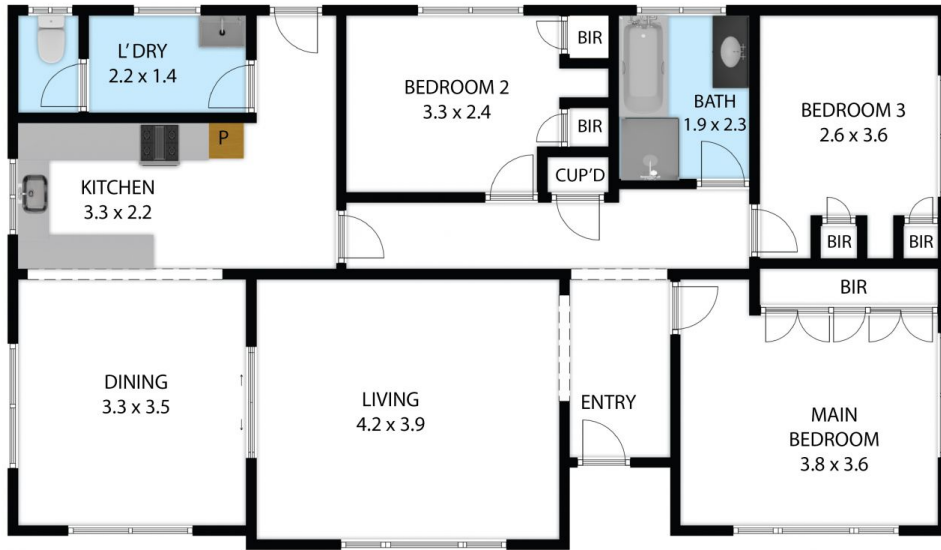
Price : \$200,000
Land Size : 758 sqm
View : <https://www.qplrural.com.au/sale/nsw/riverina/leeton/residential/house/7440811>



Craig Tyrrell
0269781008



Andrew Pellow
0269781008



2 Mitchell Street, Leeton 2705

TOTAL APPROX. FLOOR AREA 98 SQ.M
 Whilst every attempt has been made to ensure the accuracy of the floor plan contained here, measurements of doors, windows, rooms and any other items are approximate and no responsibility is taken for any error, omission, or misstatement. This plan is for illustrative purposes only and should be used as such by any prospective purchaser.



2 Mitchell Street, Leeton 2705

TOTAL APPROX. FLOOR AREA 98 SQ.M
 Whilst every attempt has been made to ensure the accuracy of the floor plan contained here, measurements of doors, windows, rooms and any other items are approximate and no responsibility is taken for any error, omission, or misstatement. This plan is for illustrative purposes only and should be used as such by any prospective purchaser.