



**56 Warri Street Ardlethan NSW**

2  1  1 

Are you looking to purchase your first home or looking for your next investment? Then look no further, introducing 56 Warri Street.

Positioned on a nice 1,012 sqm this home has plenty of potentials.

Featuring a neat and tidy kitchen with a great little breakfast bar.

The living and dining room is open-planned.

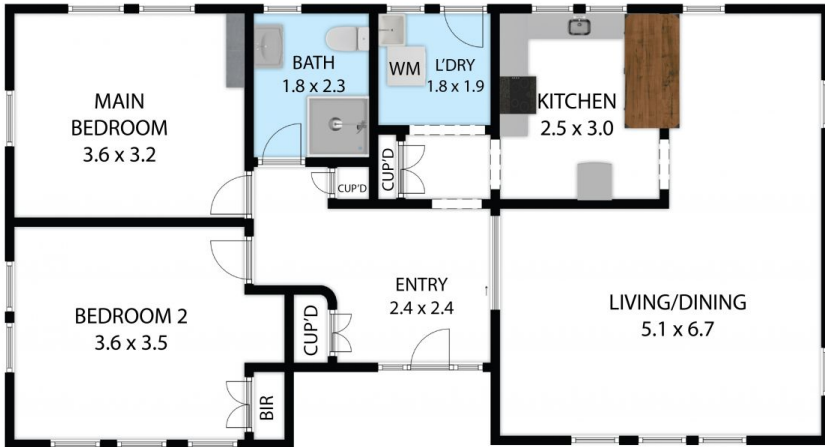
Featuring two decent-sized bedrooms with the main bathroom close by.

Situated in a great location, close to the post office, local school, and main street.

**Price** : \$220,000  
**Land Size** : 1012 sqm  
**View** : <https://www.qplrural.com.au/sale/nsw/riverina/ardlethan/residential/house/7442962>



**Sophie Litchfield**  
0487 694 450



56 Warri Street, Ardlethan 2665

TOTAL APPROX. FLOOR AREA 78 SQ.M

Whilst every attempt has been made to ensure the accuracy of the floor plan contained here, measurements of doors, windows, rooms and any other items are approximate and no responsibility is taken for any error, omission, or misstatement. This plan is for illustrative purposes only and should be used as such by any prospective purchaser.



56 Warri Street, Ardlethan 2665

TOTAL APPROX. FLOOR AREA 78 SQ.M

Whilst every attempt has been made to ensure the accuracy of the floor plan contained here, measurements of doors, windows, rooms and any other items are approximate and no responsibility is taken for any error, omission, or misstatement. This plan is for illustrative purposes only and should be used as such by any prospective purchaser.